



REEL LIGHT FLEX-SELECT

data sheet

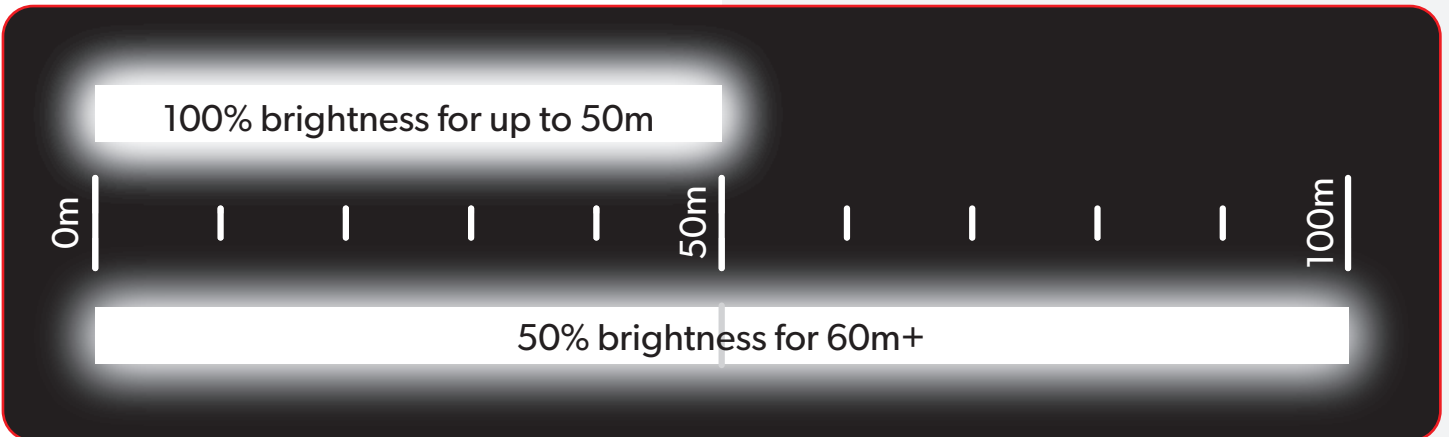
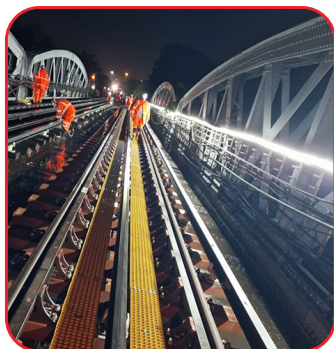
DESCRIPTION / FEATURES

Reel Light Flex-Select is a lighting solution ideal for rapid deployment ideally suited for both illumination levels of light or reduced to warning or hazard identification levels of light.

Typical Applications

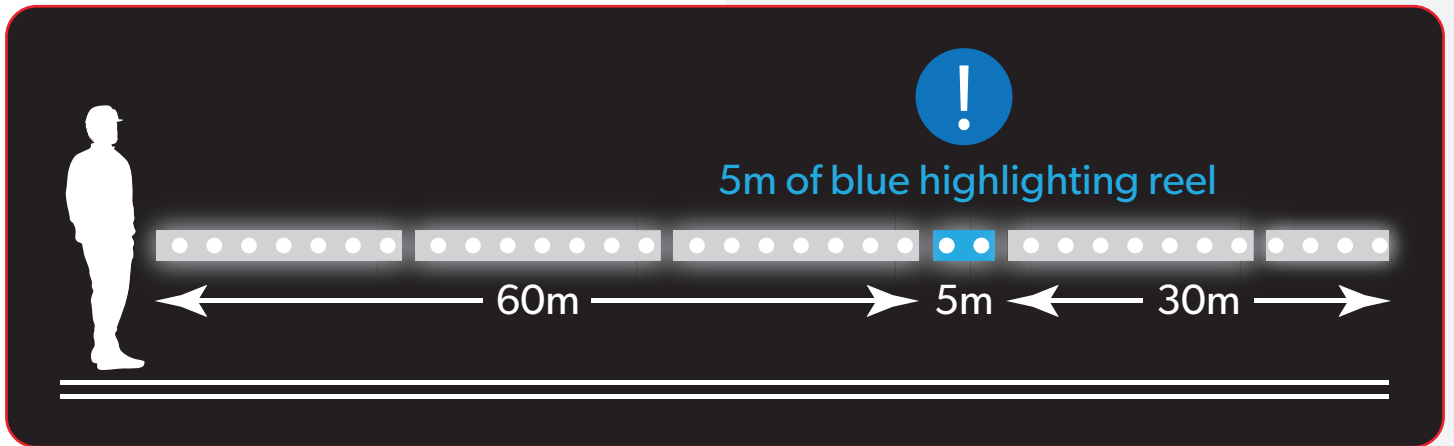
- Work areas, internal or external
- Linear paths / walkways
- Edge marking / guard rail / scaffold
- Tunnel / stairwells

- Connectible up to 100m in length maximum
- Max 100% brightness up to 50m
- Max 50% brightness for 60m+
- Rapid deployment for work site or walkway lighting
- Available in connectible sections from 10m+
- Additional sections can be added up to 100m
- Optional dimming controller for 60m+
- Coloured 'highlight sections' can be added anywhere in the system as required
- Sectional construction allows for length variations and rapid repair
- Waterproof inter connection points at 10m intervals



MODES OF USE

The Reel Light Flex-Select is highly adaptable. The modular design allows for changing both the length and coloured LED to suit the worksite. This diagram shows 95m of Reel Light Flex-Select being used to illuminate two sections of walkway or worksite, with 5m of coloured blue LED highlighting a specific area. This could be a site access way, emergency area, unsafe terrain or any other area that may require designation and identification.



SPECIFICATION

Product Code	RSL50-10-5
Power	600W (12W/m)
Voltage	110V
Length	50m (5 x 10m)
Width x Height	(Collapsed) H530 x W450 x D300mm - Handle extends to 1200mm
Lumen Output	75000 lumens (50m)
Operating Temperature	-25°C to +55°C
Colour Temperature	6000K

SPARE PARTS

PRODUCT CODE	DESCRIPTION
RSL-10-1	Separate Sections White - 10m additional/replacement section
RSL-5-B	Colour Section - 5m blue section
RSL50DC	Dimmer System - Required for applications >50m
RSL-CD	Power Input - 110V input power section

